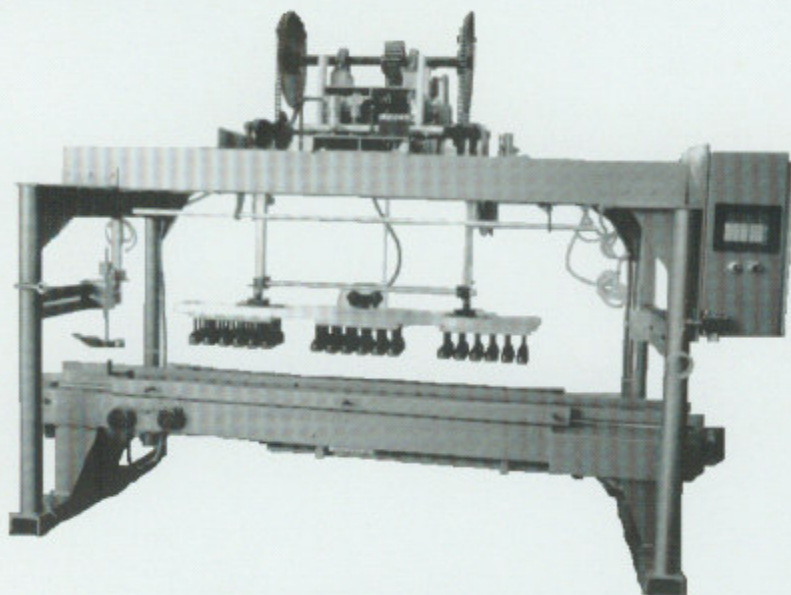
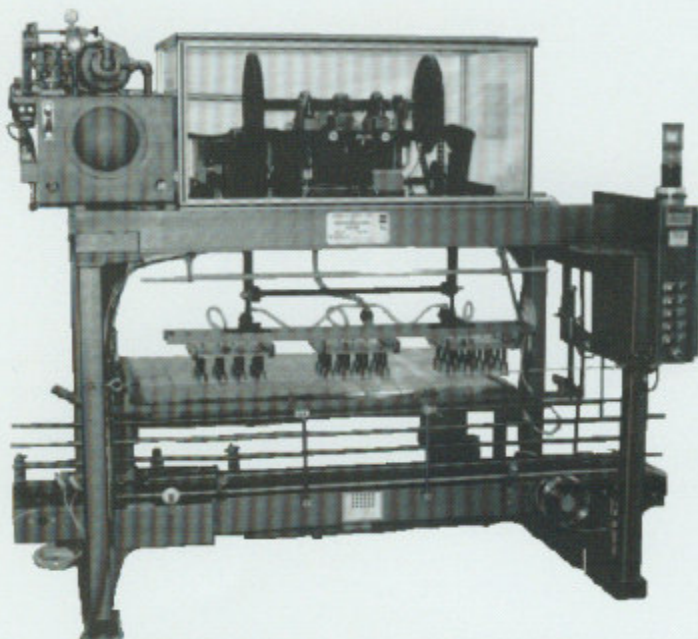


AUTOMATIC UNCASERS

RECIPROCAL MOTION UNCASERS



SERVO-ELECTRIC UNCASER WITH THREE HEADS



HYDRAULIC UNCASER WITH THREE HEADS

Available in two through six head models

- Hydraulic or Servo-Electric Main Drive
- Speeds up to 48 CPM
- Wide variety of pick-up devices to uncase:
 - empty or filled
 - round or non-round
 - glass, plastic metal or composite
- Relay or PLC controls
- Quick-change options to minimize time for change-overs
- Takeaway table and conveyors are available



(513) 874-1233

FAX: (513) 874-3375

25 Standen Drive • Hamilton, OH 45015

CLIMAX
PRODUCTS GROUP
PACKAGING MACHINERY

SPECIFICATIONS

SHIPPING WEIGHT (varies by frame size):

Approx. 2,500 - 4,000 lbs.

CASE SIZE (NOMINAL):

Minimum - 10"L x 8"W x 3"H

Maximum - 21"L x 14"W x 13"H

CONVEYOR ELEVATIONS:

CASE - 21" min.

SET DOWN HEIGHT - 14½" above case conveyor

DRIVES:

5HP HYDRAULIC MAIN DRIVE
OR

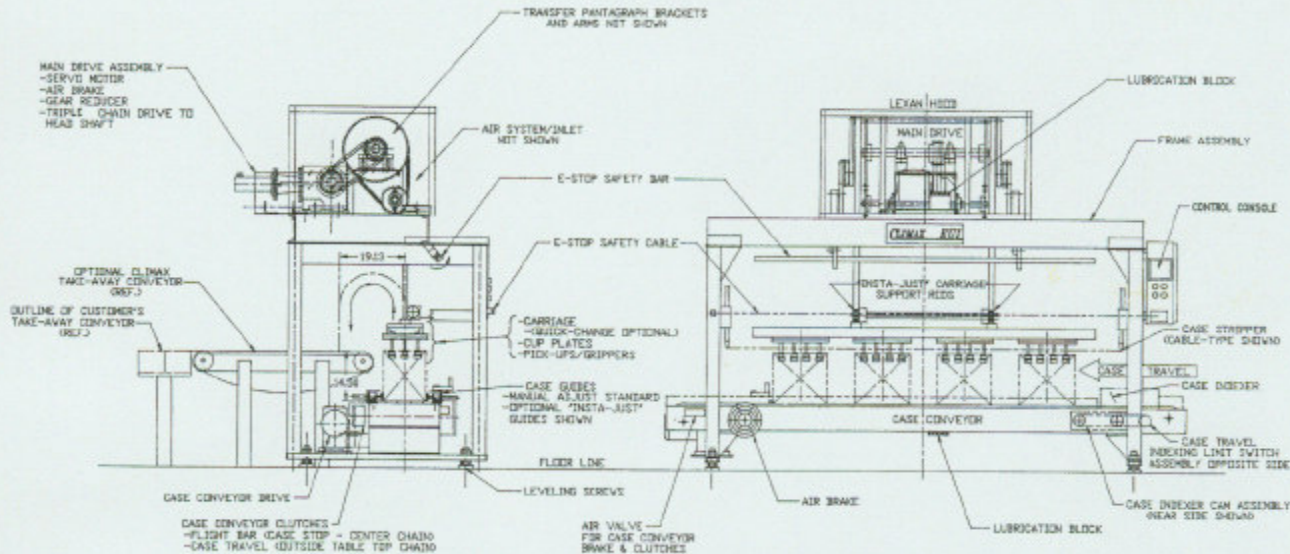
ELECTRIC SERVO-DRIVE
CASE CONVEYOR - 1½ HP fixed-speed

ELECTRICALS:

MOTORS - 230/460, 60, 3

CONTROLS - 115, 60, 1

TOTAL AMPS - 25 (Hydraulic)



SERVO-ELECTRIC UNCASER WITH FOUR HEADS

Number of Heads	Case Center Spacing	Case Conveyor Overall Length	Air Consumption At 60 PSIG	Case/Min.
2	28	127.5"	3 CFM	16
3	24	127.5"	3.5 CFM	24
4	24	151.5"	4.5 CFM	32
5	24	175.5"	5.0 CFM	40
6	24	199.5"	6.0 CFM	48

Dimensions of uncaser are determined after receipt of samples for all cases to be run.